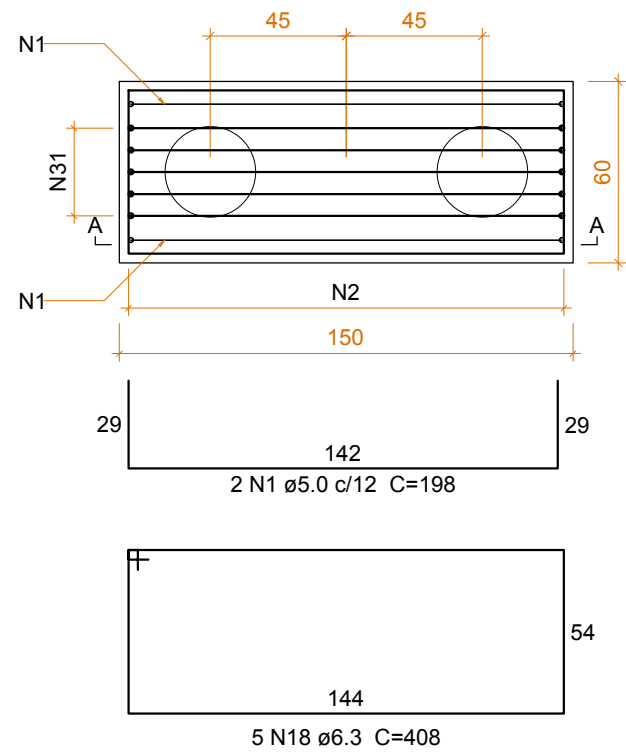
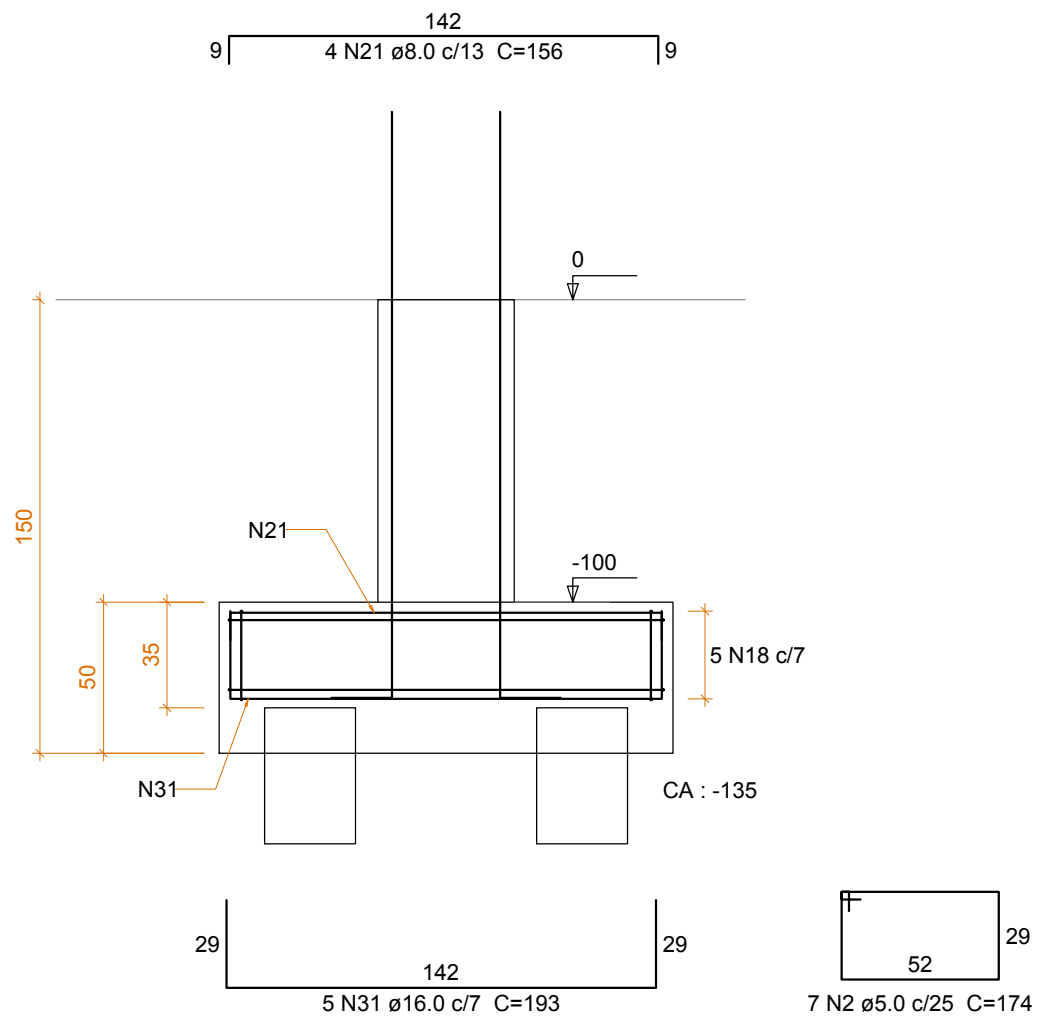


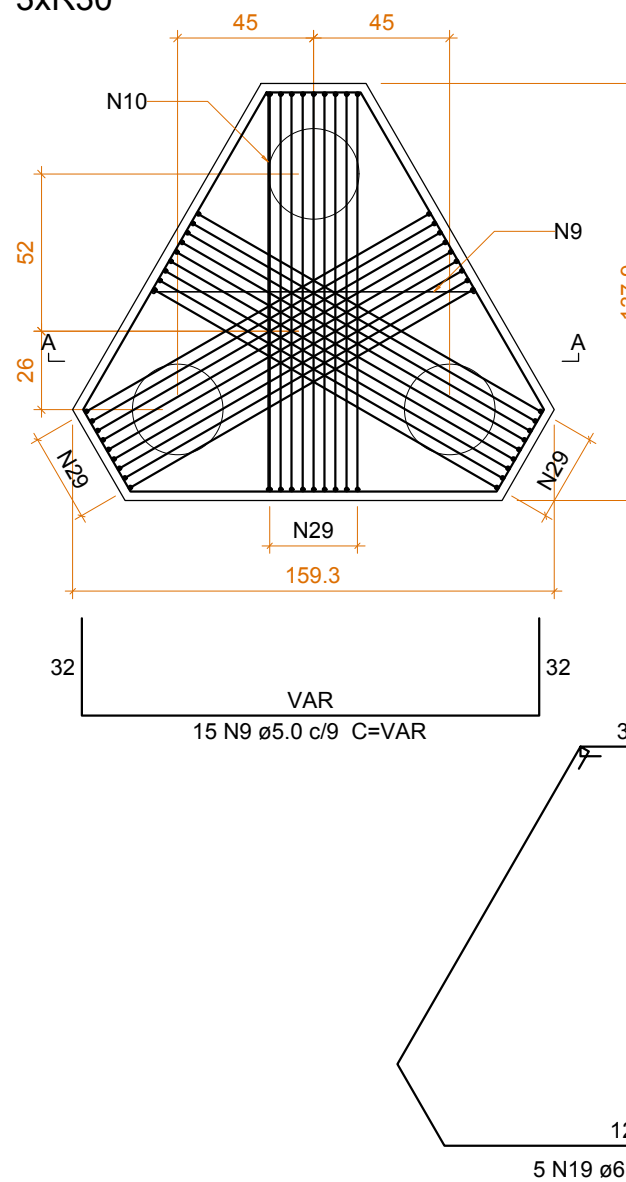
B6
2xR30
PLANTA
ESC 1:25



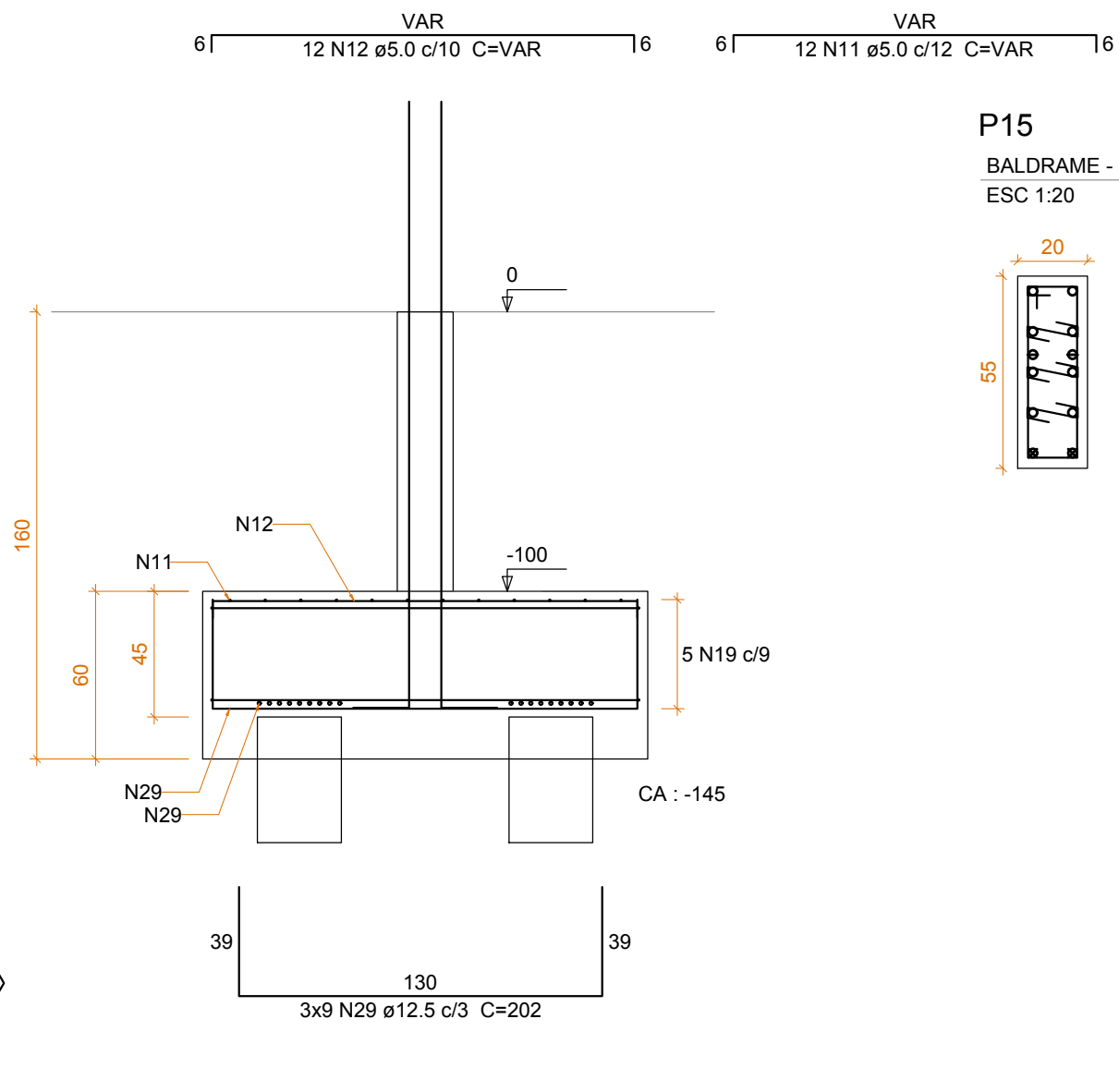
CORTE A-A
ESC 1:25



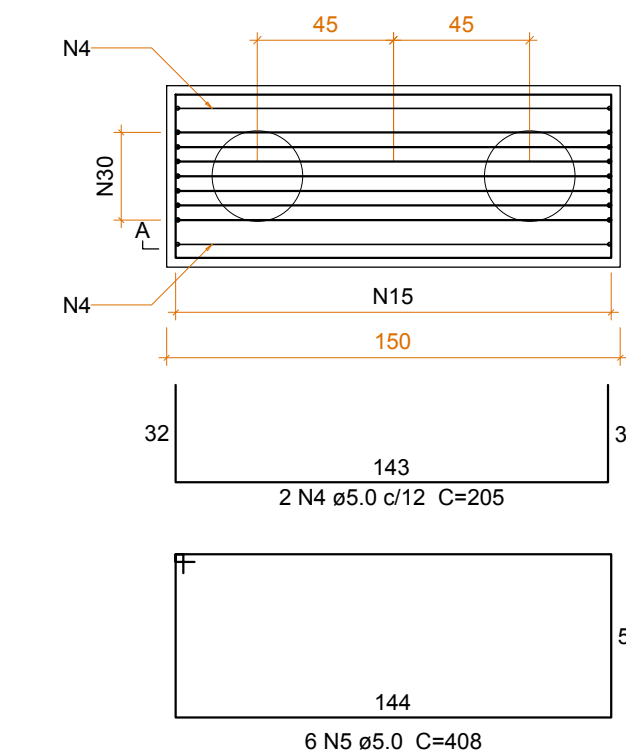
B15=B17
PLANTA
ESC 1:25
3xR30



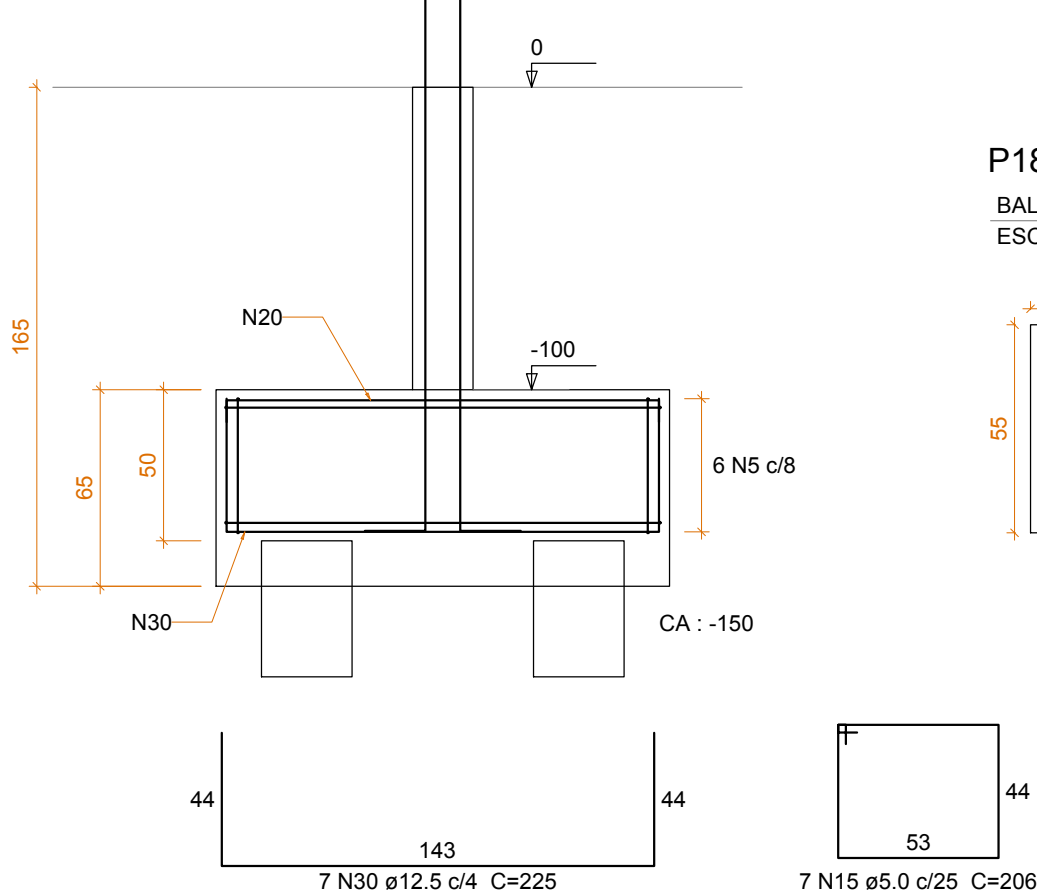
CORTE A-A
ESC 1:25



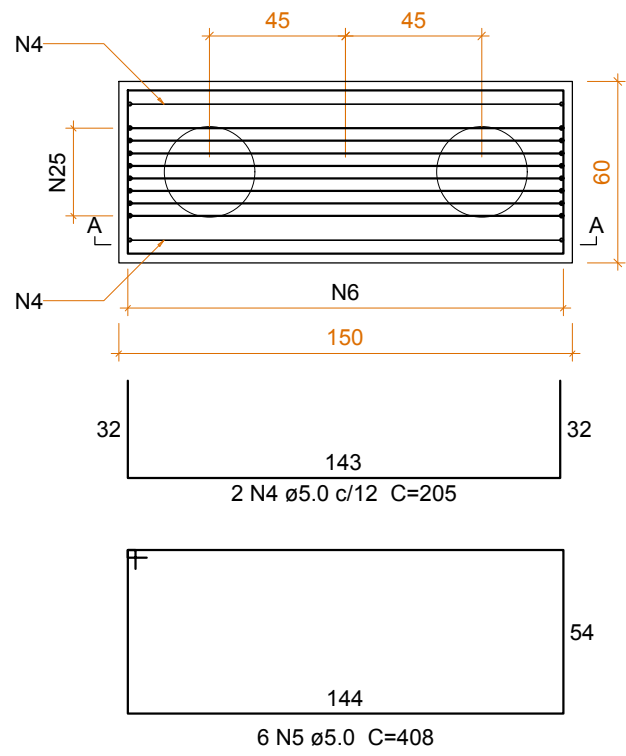
B18=B20=B21=B22
2xR30
PLANTA
ESC 1:25



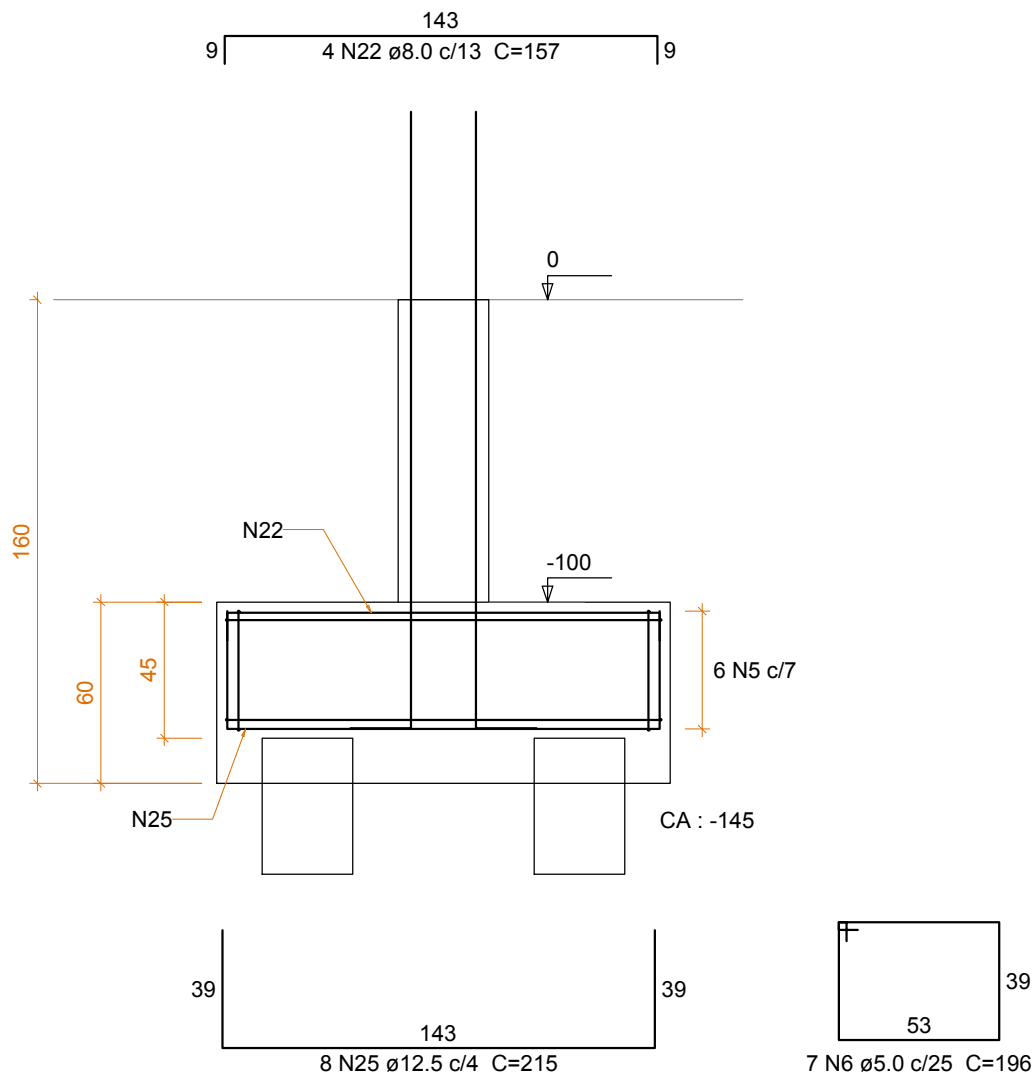
CORTE A-A
ESC 1:25



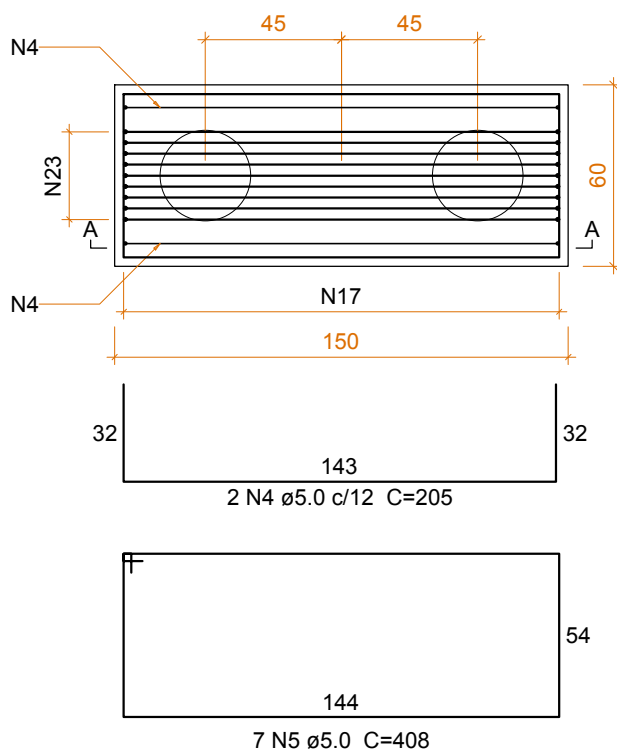
B12
2xR30
PLANTA
ESC 1:25



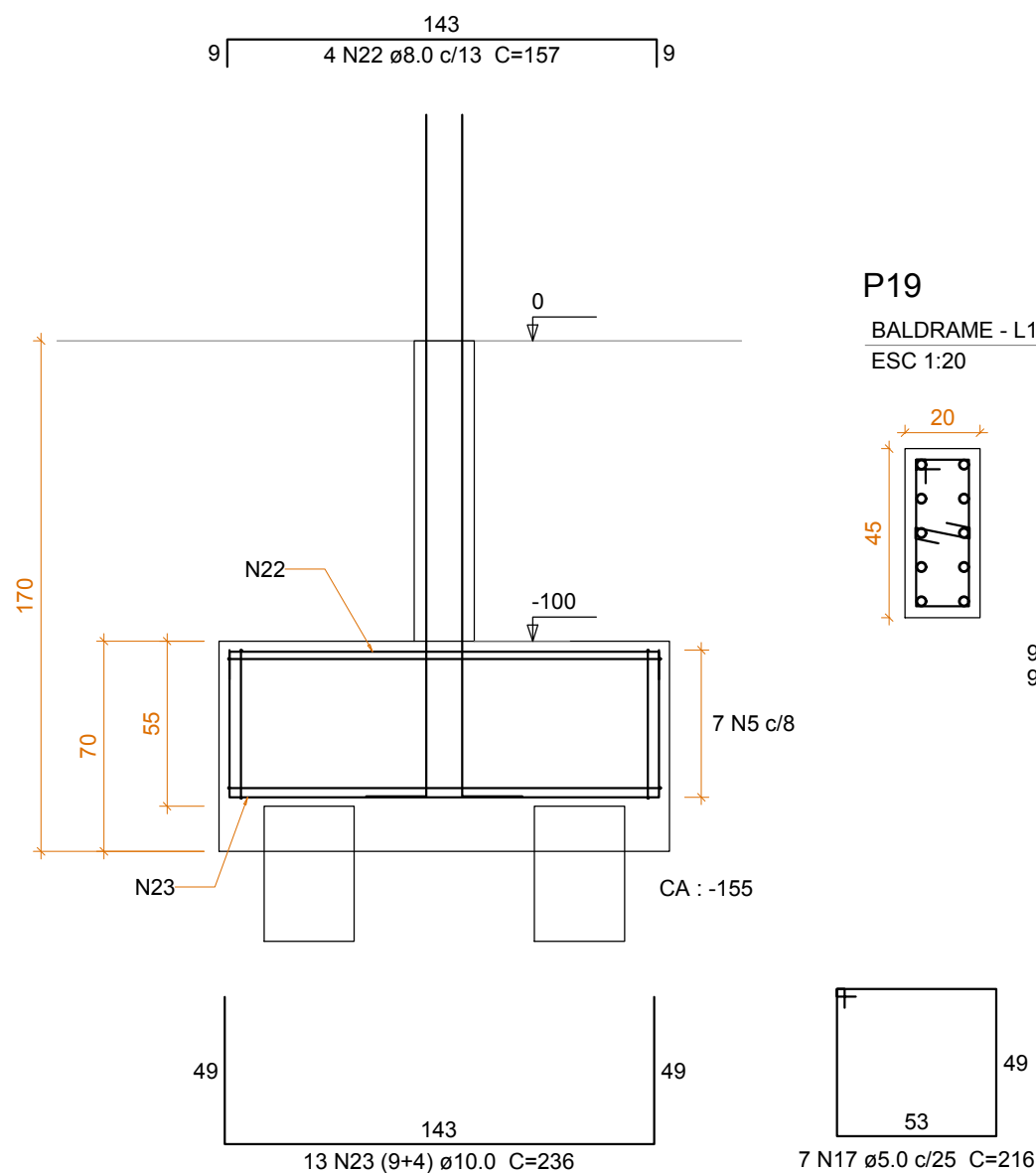
CORTE A-A
ESC 1:25



B19
2xR30
PLANTA
ESC 1:25

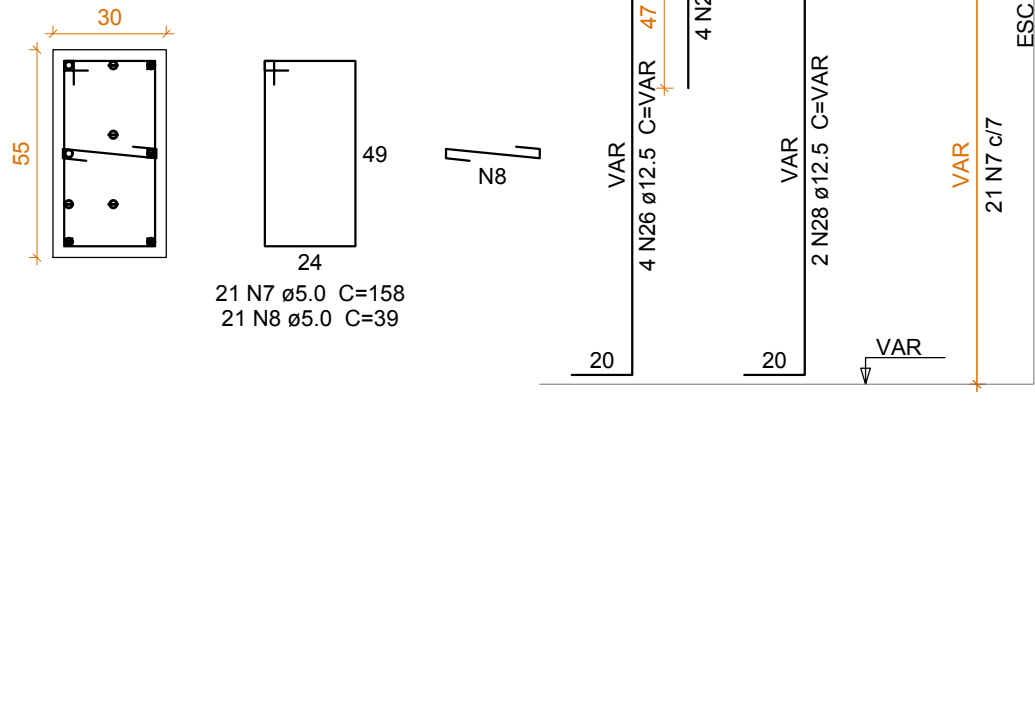


CORTE A-A
ESC 1:25



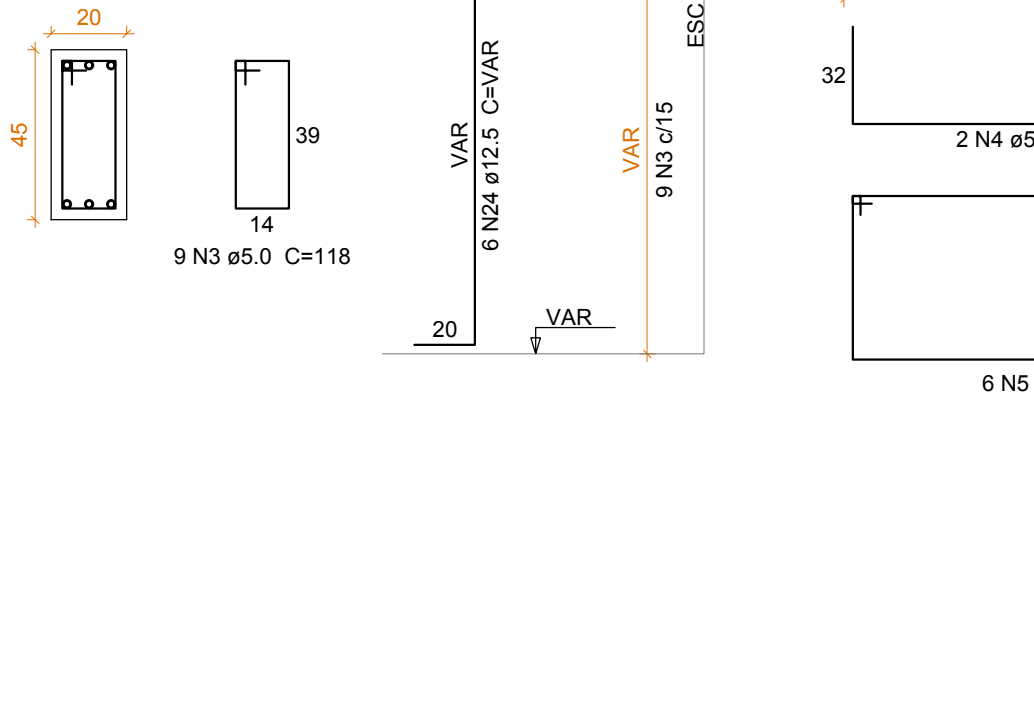
P12

BALDRAME - L1
ESC 1:20



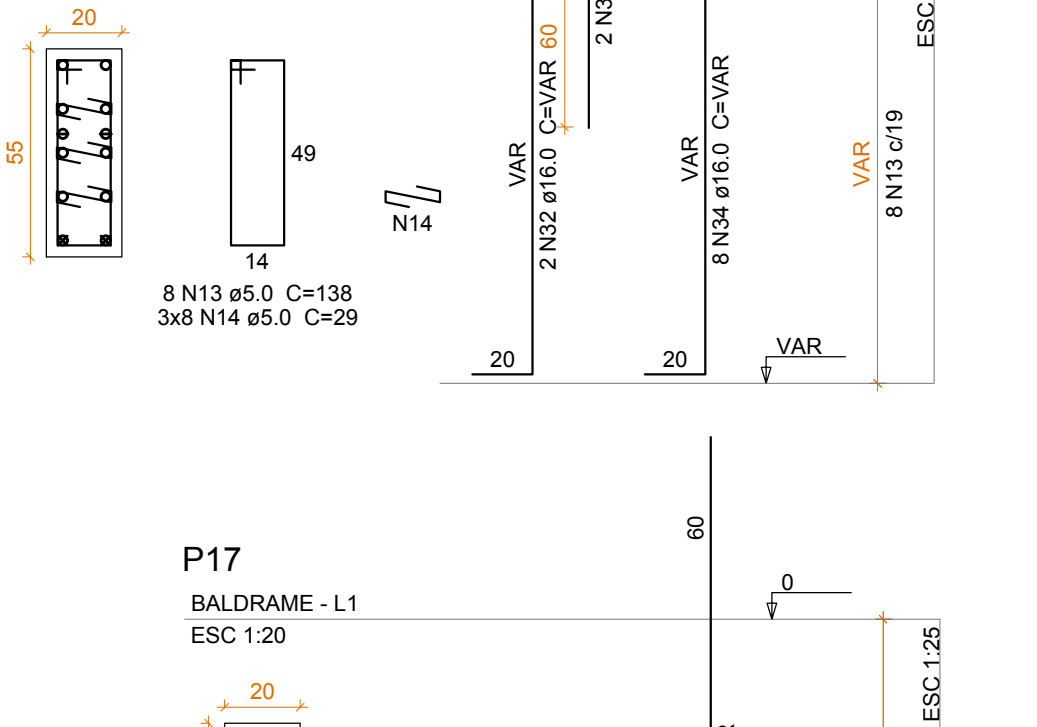
P6

BALDRAME - L1
ESC 1:20



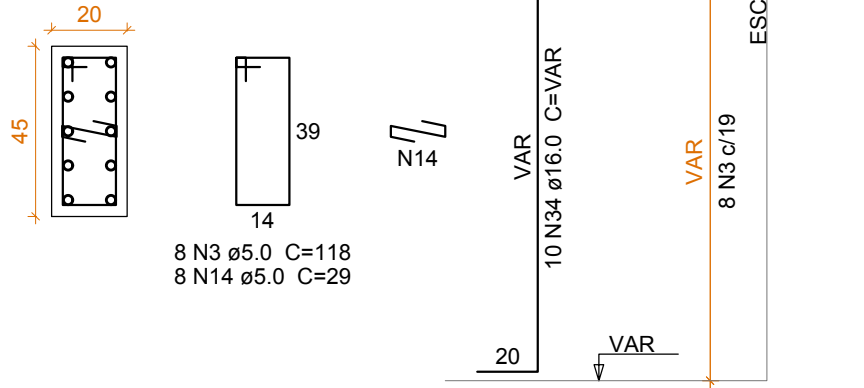
P15

BALDRAME - L1
ESC 1:20



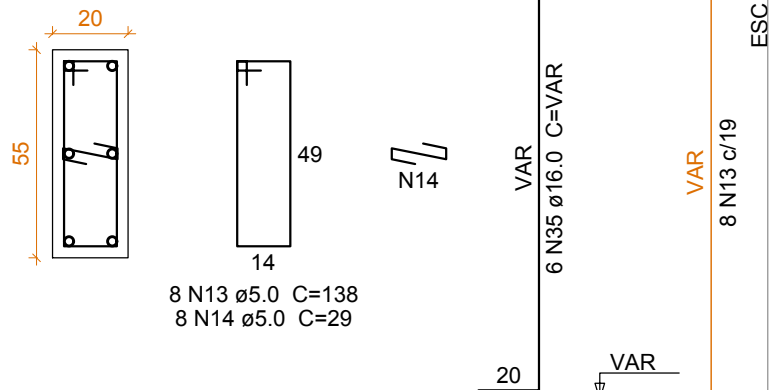
P17

BALDRAME - L1
ESC 1:20



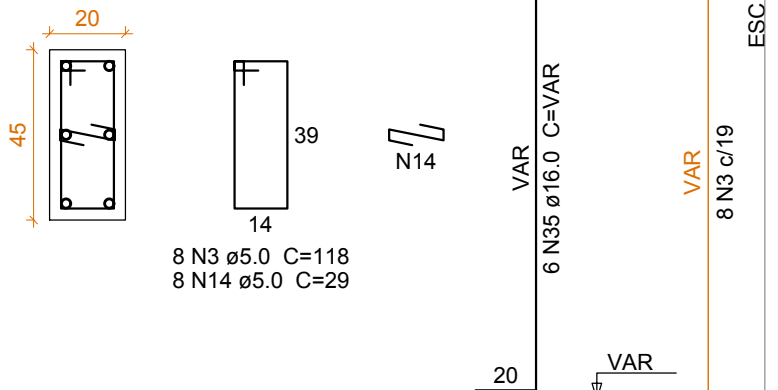
P18

BALDRAME - L1
ESC 1:20



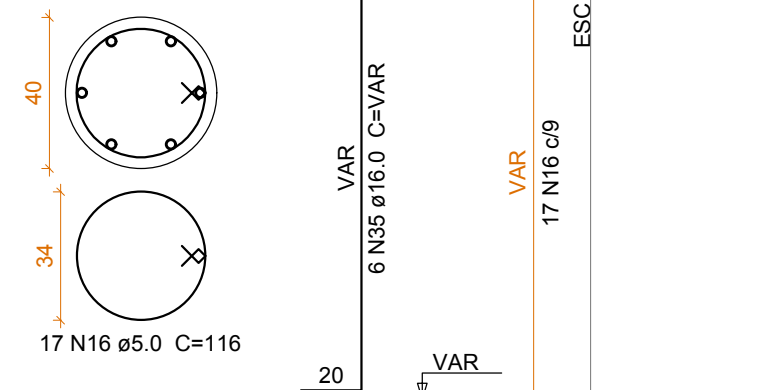
P20

BALDRAME - L1
ESC 1:20



P21=P22

BALDRAME - L1
ESC 1:20



Relação do aço

AÇO	N	DIAM (mm)	QUANT	C.UNIT (cm)	C.TOTAL (cm)
B6	1	5.0	2	198	396
B12	2	5.0	7	174	1218
B19	3	5.0	34	118	4012
P12	4	5.0	12	205	2460
P15	5	5.0	37	408	15096
P17	6	5.0	7	196	1372
2xP21	7	5.0	21	158	3318
	8	5.0	21	39	819
	9	5.0	30	VAR	VAR
	10	5.0	34	VAR	VAR
	11	5.0	24	VAR	VAR
	12	5.0	24	VAR	VAR
	13	5.0	16	138	2208
	14	5.0	57	29	1653
	15	5.0	28	206	5768
	16	5.0	34	116	3944
	17	5.0	7	216	1512
	18	6.3	5	408	2040
	19	6.3	10	469	4690
	20	6.3	24	154	3696
	21	8.0	4	156	624
	22	8.0	8	157	1256
	23	10.0	13	236	3068
	24	12.5	6	VAR	VAR
	25	12.5	8	215	1720
	26	12.5	4	VAR	VAR
	27	12.5	4	94	376
	28	12.5	2	VAR	VAR
	29	12.5	54	202	10908
	30	12.5	28	225	6300
	31	16.0	5	193	965
	32	16.0	2	VAR	VAR
	33	16.0	2	121	242
	34	16.0	18	VAR	VAR
	35	16.0	24	VAR	VAR
	36	16.0	10	VAR	VAR

Resumo do aço

AÇO	DIAM (mm)	C.TOTAL (m)	PESO + 10 % (kg)
CA50	6.3	104.3	28.1
	8.0	18.8	8.2
	10.0	30.7	20.8
	12.5	215.2	228
	16.0	130.8	227
CA60	5.0	639.2	108.4
PESO TOTAL (kg)			
CA50	512		
CA60	108.4		

Volume de concreto (C-25) = 7.00 m³
Área de forma = 42.48 m²

1	Revisão 01 - Mudança na Escada	07/2017	RCB
0	Emissão Inicial	06/2017	RCB
Revisão	Descrição	Data	Responsável
 AMFRI - ASSOCIAÇÃO DOS MUNICÍPIOS DA REGIÃO DA FOZ DO RIO ITAJAÍ Rua Luiz Lopes Gonzaga, nº 1655 - Bairro São Vicente - Itajaí-SC - CREA/SC nº 050968-0			
Estado de Santa Catarina BOMBEIRO MILITAR DE SANTA CATARINA			
Data Junho/2017	Projeto ESTRUTURAL AMPLIAÇÃO DO 7º B.B.M EM ITAJAÍ	Conteúdo da folha Armação dos blocos 2 de 2	
Escala Indicada	Local Av Sete de Setembro, 1878 Bairro Fazenda - Itajaí	Estática	Área a construir: 870,90m²
Arquivo -			
Desenho Rafael B.	7º Batalhão de Bombeiro Militar em Itajaí / SC		Projeto
ART -	Comandante do 7º B.B.M.		Rafael Calistro Borba
Folha 03/21			Eng Civil - CREA SC 093.243-9